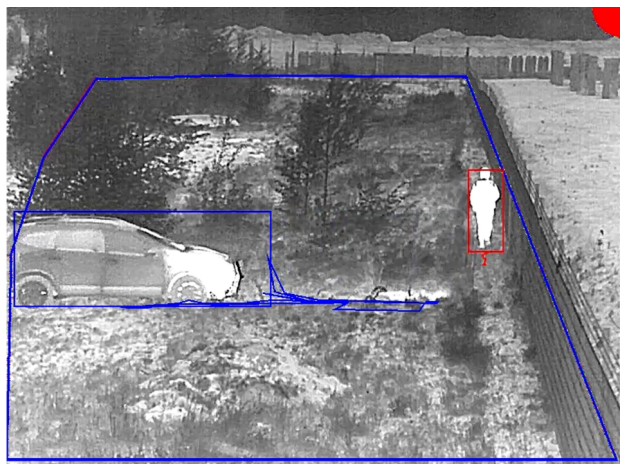


AXIS Perimeter Defender

High-security, scalable perimeter protection

AXIS Perimeter Defender offers edge-based camera applications that enable the setup of a reliable and cost-effective perimeter protection system. The analytics can automatically detect and respond to people and vehicles intruding on your property. Supported detection scenarios include intrusion, zone crossing, and loitering. With a separate license, the analytics can also sync with a PTZ camera for autotracking and close-ups of detected objects. AI-based human and vehicle classifications are additionally available for selected cameras, enabling easier setup and optimal performance in different terrains and challenging conditions. An installation program, design tool and optional VMS plugins are included.

- > **Edge-based intrusion detection system**
- > **Classifies humans and vehicles**
- > **Multiple detection scenarios**
- > **PTZ autotracking for automatic close-ups**
- > **Bounding box metadata overlay**



AXIS Perimeter Defender

General

Typical use cases	Large-scale perimeter protection Intrusion detection, typically used in sterile zones of power plants, chemical plants and other types of critical infrastructure facilities within the industrial, transportation and government sectors
Supported devices	Axis outdoor cameras with support for AXIS Camera Application Platform and compatible firmware ^a
Compute platform	Edge
Configuration	PC-based installation program included (requires Windows® 7, 8 or 10, Intel Core 2 Duo or later and 2 GB RAM) Modes: Calibration mode with human and vehicle classifications, CPNI-certified. AI mode with human and vehicle classifications. Calibration and AI mode with human and vehicle classifications.
Supporting software	PC system design tool included
Languages	English
Capabilities	
Scenarios	Intrusion Loitering Zone crossing Conditional zone crossing Multiple concurrent scenarios supported
Functionality	Person/vehicle filtering Detection sensitivity Headlight mitigation Insects/droplets on lens filter Automatic and manual device discovery Visual configuration of detection scenarios Visual confirmation to verify setup Backup/restore of settings Calibration mode:

Crouch/crawl detection
Log roll detection
Automatic and manual perspective calibration
AXIS Perimeter Defender PTZ Autotracking (requires separate licence) that enables a fixed visual or thermal camera to take control of a PTZ camera for autotracking^a
AI mode:
Object size filter

Limitations Not suitable for areas with large numbers of moving objects for example in public squares or transit areas.
Extreme weather conditions or insufficient lighting (visual cameras) could impact detection performance.
Calibration mode: Correct mounting of camera, calibration, and configuration required. See the user manual for instructions.
AXIS Perimeter Defender PTZ Autotracking requires calibration.

System integration

Application Programming Interface	Optional integration modules available for Milestone XProtect® and Genetec™ Security Center. Additional video management software licenses might be required. Includes support for dynamic event streaming for integration with other video management software.
Event management	Integrates with the camera to enable event streaming to a video management system (VMS) and event actions such as external output activation, notifications, and edge storage. ONVIF® motion alarm event (Ref: ONVIF Service Imaging Specification)
Metadata	Burnt-in metadata overlay Configuration of alarm output and metadata stream

a. *Applicable only for supported products. For a complete list of supported products, go to axis.com/products/axis-perimeter-defender*

Environmental responsibility:

axis.com/environmental-responsibility